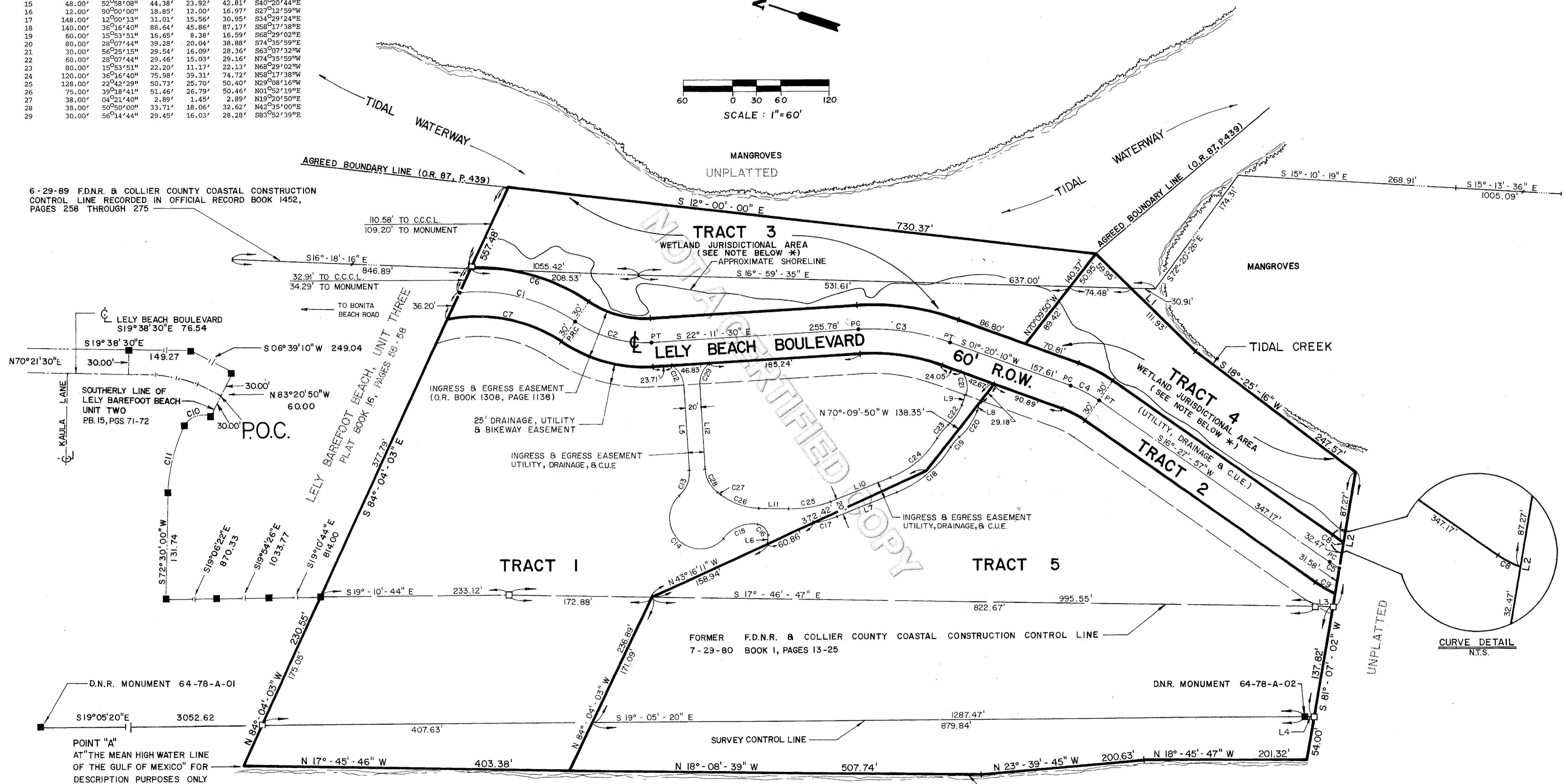
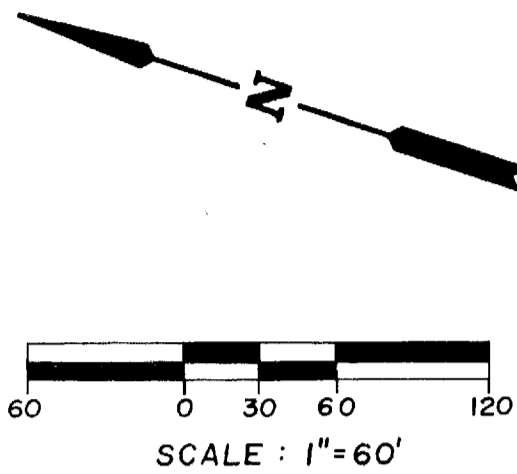


CX - CURVE DATA

Curve No.	Radius	Delta	Arc	Tangent	Chord	Chord Bearing
1	210.00'	41°09'45"	150.87'	78.86'	147.65'	S04°38'29"E
2	150.00'	38°07'54"	99.83'	51.84'	98.00'	S03°07'33"E
3	280.00'	23°31'40"	114.98'	58.31'	114.17'	S10°25'40"E
4	150.00'	15°07'48"	39.61'	19.92'	39.50'	S08°54'04"W
5	150.00'	05°21'31"	14.03'	7.02'	14.02'	S13°47'12"W
6	240.00'	36°55'25"	154.67'	80.13'	152.00'	S02°31'19"E
7	180.00'	47°08'04"	148.08'	78.52'	143.94'	S07°37'38"E
8	120.00'	00°03'04"	0.11'	0.05'	0.11'	S16°26'25"W
9	180.00'	08°47'49"	27.64'	13.85'	27.61'	S12°04'03"W
10	25.00'	90°00'00"	39.27'	25.00'	35.36'	N38°20'50"W
11	205.00'	24°09'10"	86.42'	43.86'	85.78'	S84°34'35"W
12	30.00'	56°27'44"	29.54'	16.09'	28.46'	S39°41'07"W
13	38.00'	50°50'00"	33.71'	18.06'	32.62'	N86°35'00"W
14	38.00'	187°27'27"	124.33'	-581.08'	75.84'	S25°06'16"W
15	48.00'	52°58'08"	44.38'	23.92'	42.81'	S40°20'44"E
16	12.00'	90°00'00"	18.85'	12.00'	16.97'	S27°12'59"W
17	148.00'	12°00'13"	31.01'	15.56'	30.95'	S34°29'24"E
18	140.00'	36°16'40"	88.64'	45.86'	87.17'	S58°17'38"E
19	60.00'	15°53'51"	16.65'	8.38'	16.59'	S68°29'02"E
20	80.00'	28°07'44"	39.28'	20.04'	38.88'	S74°35'59"E
21	30.00'	56°25'15"	29.54'	16.09'	28.36'	S65°07'32"E
22	60.00'	28°07'44"	29.46'	15.03'	29.16'	N74°35'59"W
23	80.00'	15°53'51"	22.20'	11.17'	22.13'	N68°29'02"W
24	120.00'	36°16'40"	75.98'	39.31'	74.72'	N58°17'38"W
25	128.00'	22°42'29"	50.73'	25.70'	50.40'	N29°08'16"W
26	75.00'	39°18'41"	51.46'	26.79'	50.46'	N01°52'19"E
27	38.00'	04°21'40"	2.89'	1.45'	2.89'	N19°20'50"E
28	38.00'	50°50'00"	33.71'	18.06'	32.62'	N42°35'00"E
29	30.00'	56°14'44"	29.45'	16.03'	28.28'	S83°52'39"E

LELY BAREFOOT BEACH UNIT FOUR

A SUBDIVISION LYING IN SECTION 7, TOWNSHIP 48 SOUTH, RANGE 25 EAST
COLLIER COUNTY, FLORIDA.



LXX - COURSE DATA

NO.	Bearing	Distance
1	S25°52'10"W	171.88'
2	S81°07'02"W	168.47'
3	S17°24'04"E	20.33'
4	S19°05'20"E	10.88'
5	S68°00'00"W	105.60'
6	S72°12'59"W	11.61'
7	S40°29'37"E	79.13'
8	S88°39'50"E	11.32'
9	N88°39'50"W	14.00'
10	N40°29'36"W	79.24'
11	N17°47'01"W	36.85'
12	N68°00'00"E	105.86'

GULF OF MEXICO

* NOTE:

CONSTRUCTION ACTIVITIES WITHIN TRACTS 3 AND 4 SHALL BE LIMITED TO THE SINGLE DOCKING FACILITY, PERMITTED BY THE FLORIDA DEPARTMENT OF NATURAL RESOURCES ON DECEMBER 12, 1988 UNLESS THE DOCKING FACILITY IS AMMENDED BY THAT AGENCY.

THIS INSTRUMENT PREPARED BY:
JAMES S. RICHMOND, P.L.S.
COASTAL ENGINEERING CONSULTANTS, INC.
PROFESSIONAL ENGINEERS AND LAND SURVEYORS
3106 SOUTH HORSESHOE DRIVE, NAPLES, FLORIDA